

H30 SERIES

The H series is truss with increased wall thickness for the main chord tubes (3 mm), which guarantees extended durability. The H series is primarily designed for high frequency users like rental or exhibition companies or for semi permanent installations in demanding circumstances i.e., moving lighting rigs in discotheques, scenery or touring exhibition stands.

The main characteristics of the 30 series truss are compactness, strength, versatility, low unit weight and easy assembly. These features have made the X/H30 series a standard in the exhibition and rental markets.

The conical coupling system (CCS6) allows for fast, efficient and highly aesthetic assembly of permanent and temporary structures.

Prolite supplies a variety of X/H30 elements that provide maximum flexibility:

- 3 types; ladder, triangle, square
- several lengths, standard or custom
- circles or arches
- box- & book-corner system
- several standard corners
- several accessories
- custom made pieces
- colour coating



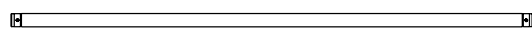
X coupler
1 ring

H coupler
2 rings

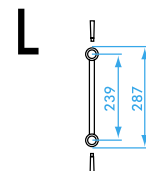
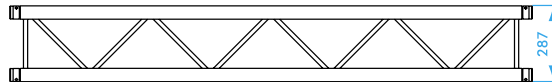
The X and H series are distinguished by the number of recessed rings in the coupler receiver.



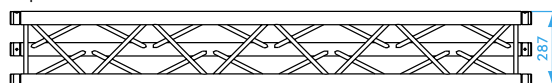
Top view H30L



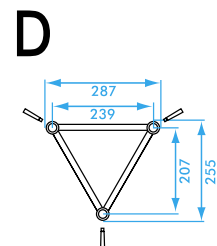
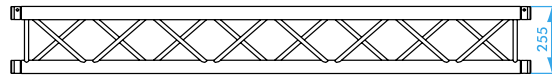
Side view H30L



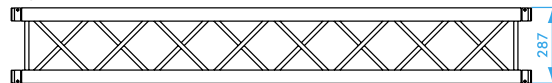
Top view H30D



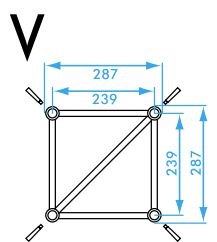
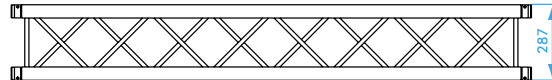
Side view H30D



Top view H30V



Side view H30V

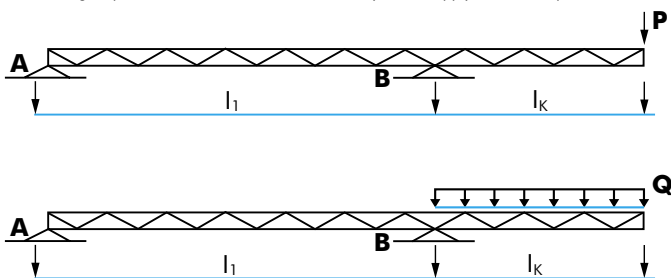


PROLYTE H30V - ALLOWABLE LOADING

SPAN		UNIFORMLY DISTRIBUTED LOAD		DEFLECTION		MAXIMUM ALLOWABLE POINT LOADS										weight
						CENTRE POINT LOAD		DEFLECTION		SINGLE LOAD THIRD POINTS		SINGLE LOAD FOURTH POINTS		SINGLE LOAD FIFTH POINTS		
m	ft	kg/m	lbs/ft	mm	inch	kg	lbs	mm	inch	kg	lbs	kg	lbs	kg	lbs	
1	3,3	1984,1	1335,0	1	0,04	1984,1	4378,9	1	0,04	992,1	2189,5	660,3	1457,3	496,0	1094,7	6,4
2	6,6	988,9	665,4	4	0,16	1977,8	4365,0	3	0,12	988,9	2182,5	657,2	1450,4	494,5	1091,3	12,8
3	9,8	657,2	442,2	9	0,35	1936,7	4274,4	7	0,28	985,8	2175,6	654,0	1443,4	492,9	1087,8	19,2
4	13,1	491,3	330,6	17	0,67	1447,0	3193,6	13	0,51	982,6	2168,6	650,9	1436,5	491,3	1084,3	25,6
5	16,4	391,8	263,6	26	1,02	1152,0	2542,4	21	0,83	864,0	1906,8	576,0	1271,2	478,1	1055,1	32,0
6	19,7	318,1	214,0	37	1,46	954,2	2105,9	30	1,18	715,6	1579,4	477,1	1052,9	396,0	873,9	38,4
7	23,0	232,0	156,1	51	2,01	812,0	1792,1	41	1,61	609,0	1344,1	406,0	896,1	337,0	743,7	44,8
8	26,2	176,2	118,5	66	2,60	704,6	1555,1	53	2,09	528,5	1166,3	352,3	775,5	292,4	645,4	51,2
9	29,5	137,9	92,8	84	3,31	620,4	1369,2	67	2,64	465,3	1026,9	310,2	684,6	257,5	568,2	57,6
10	32,8	110,5	74,3	104	4,09	552,4	1219,0	83	3,27	411,3	914,3	276,2	609,5	229,2	505,9	64,0
11	36,1	90,2	60,7	125	4,92	496,1	1095,0	100	3,94	372,1	821,2	248,1	547,5	205,9	454,4	70,4
12	39,4	74,8	50,3	149	5,87	448,7	990,4	119	4,69	336,6	742,8	224,4	495,2	186,2	411,0	76,8
13	42,6	62,8	42,3	175	6,89	408,2	900,8	140	5,51	306,1	675,6	204,1	450,4	169,4	373,8	83,2
14	45,9	53,3	35,8	203	7,99	372,9	823,1	163	6,42	297,7	617,3	186,5	411,5	154,8	341,6	89,6
15	49,2	45,6	30,7	233	9,17	342,0	754,8	187	7,36	256,5	566,1	171,0	377,4	141,9	313,2	96,0
16	52,5	39,3	26,5	265	10,43	314,5	694,1	212	8,35	235,9	520,6	157,3	347,1	130,5	288,1	102,4

1 inch = 25.4 mm | 1 m = 3.28 ft | 1 lbs = 0.453 kg

- Max. allowable CPL between 2 node points at each of the main chords = 100 kg. The total applied load should not exceed the data in the loading table.
- Loading figures only valid for static loads and spans with two supporting points. Spans must be supported at each end.
- If dynamic loads or more supporting points are applied contact a structural engineer or Prolyte.
- Loading figures are based on the German DIN standards.
- To comply to the BS and ANSI standards the loading data have to be multiplied with 0,85
- Self weight of the trusses is already taken into account.
- For longer spans than indicated in the table, Prolyte can supply data on request.



LOADING

single load ballast at point A	$P \times l_k / l_1$
distributed load over length l_k	$(Q \times l_k) \times \frac{l_k}{2 / l_1}$

P = Kg or N
l = mm or m

Loading figures only valid for static loads and spans with two supporting points. Point A should have enough ballast weight to avoid the risk of uplifting caused by the cantilever weight P/q.

CANTILEVER LOAD H30D

l_k (m)	P (Kg)	q (Kg / m)
0,5	849	1765
1,0	527	846
1,5	381	430
2,0	297	260
2,5	242	173
3,0	203	123
3,5	172	92
4,0	148	70

CANTILEVER LOAD H30V

l_k (m)	P (Kg)	q (Kg / m)
0,5	992	1984
1,0	989	989
1,5	781	657
2,0	626	491
2,5	521	351
3,0	446	256
3,5	388	194
4,0	343	152