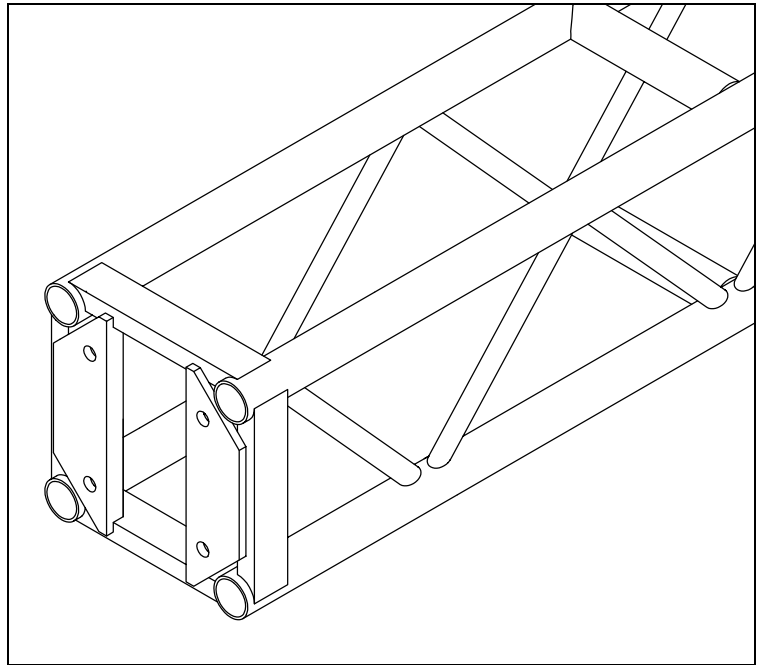


ENGINEERING

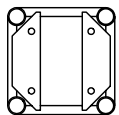
12" x 12" General Purpose truss is manufactured from 2" dia x 0.125" wall and 1" dia x 0.125" wall 6082T6 or 6061T6 Aluminium tubing. Bolts are supplied for assembly of truss elements. This truss is ideal for conference, exhibition, and small venue work. By incorporating suitable sleeve blocks and towers, this truss can be used with our Ground Support System.

PRODUCT CODE	DESCRIPTION	WT lbs
B0700	10' Section	55
B0701	8' Section	46
B0702	5' Section	35
B0703	2' 6" Section	24
B4700	3m Section	55
B4701	2.5m Section	46.5
B4702	2m Section	40.5
B4703	1.5m Section	35
B4704	1m Section	19.5
B4705	2 Way Corner Block	15
B4705A	3 Way Corner Block	17.5
B4706	4 Way Corner Block	19.5
B4707	6 Way Corner Block	26.5
B4708	Flat Plate Hinge Section	14

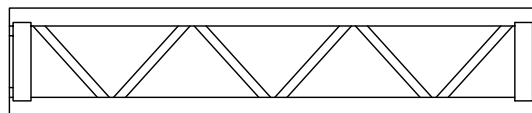


Allowable Load Data	Maximum Allowable Uniform Loads		Maximum Allowable Center Point Loads		
	Span feet (meters)	Loads pounds (kgs)	Maximum deflection inches (mm)	Loads pounds (kgs)	Maximum deflection inches (mm)
	10 (3.048)	6140 (2785)	0.276 (7)	4497 (2040)	0.315 (8)
	20 (6.096)	3100 (1406)	1.10 (28)	1550 (703)	1.10 (28)
	30 (9.144)	1726 (783)	2.21 (56)	864 (392)	2.21 (56)
	40 (12.192)	855 (388)	2.96 (75)	428 (194)	2.96 (75)

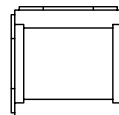
LOADING FIGURES show maximum loads between supports in addition to the self weight of the truss. Information extracted from the structural report by Broadhurst, Goodwin, and Dunn suit maximum shear capacity. All loads include 20% overload factor for dynamic effects.



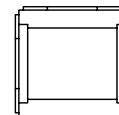
End View



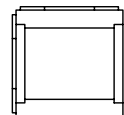
Side View



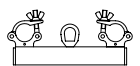
4 Way



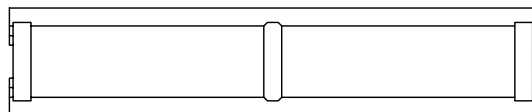
3 Way



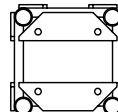
2 Way



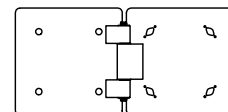
Lifting Point



Plan View



6 Way



Flat Pivot Section